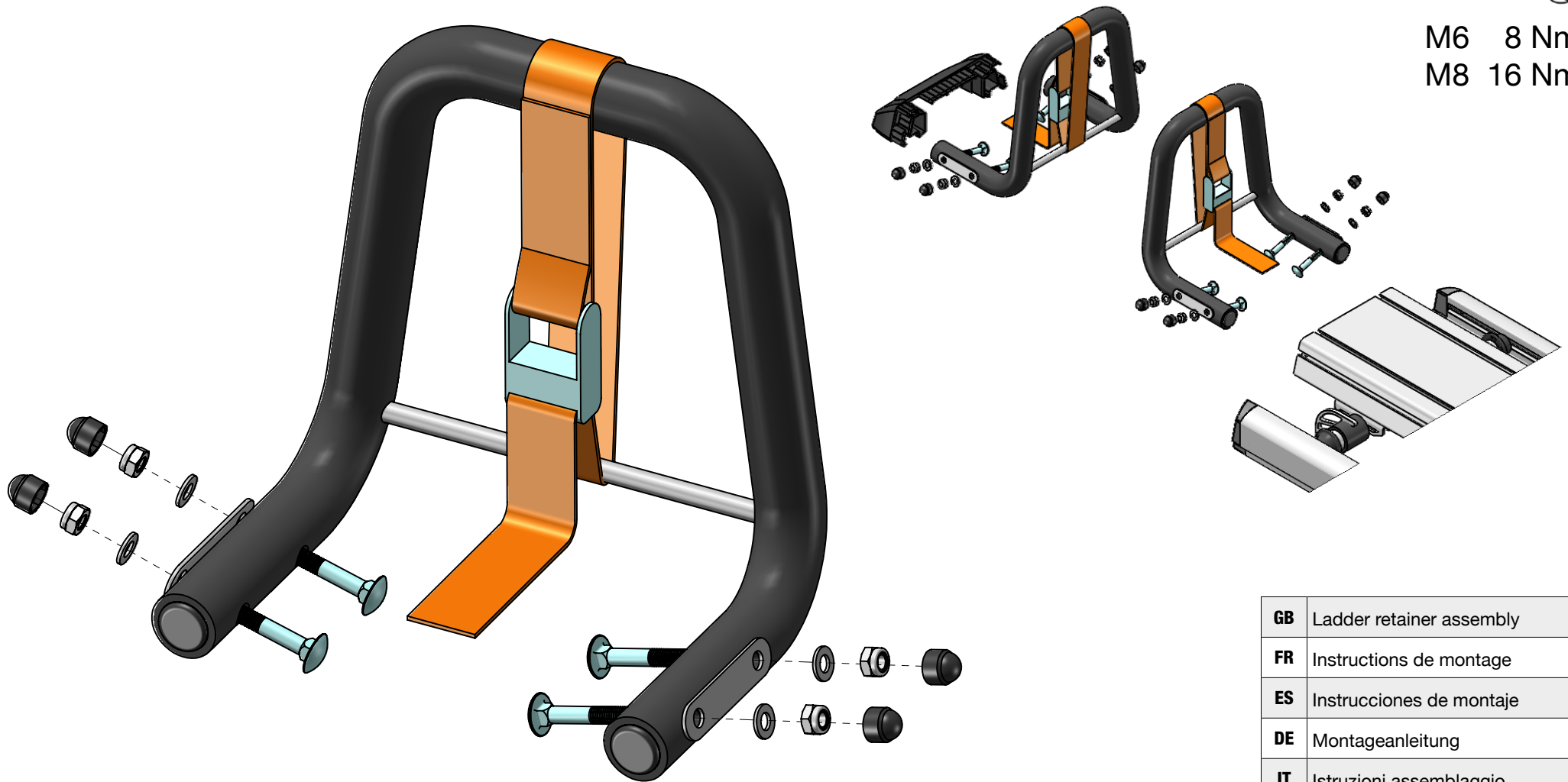




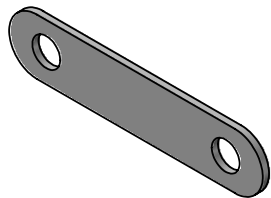
M6 8 Nm
M8 16 Nm



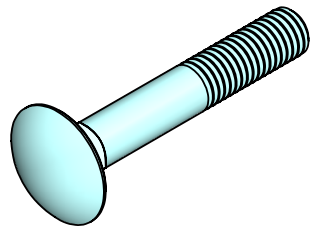
GB	Ladder retainer assembly
FR	Instructions de montage
ES	Instrucciones de montaje
DE	Montageanleitung
IT	Istruzioni assemblaggio
PT	Instruções de montagem



(x2)



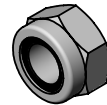
(x4)



M8x50 (x8)



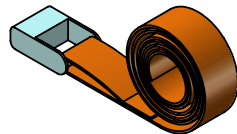
Ø8x16 (x8)



M8 (x8)



(x8)



(x2)



M6 8 Nm
M8 16 Nm